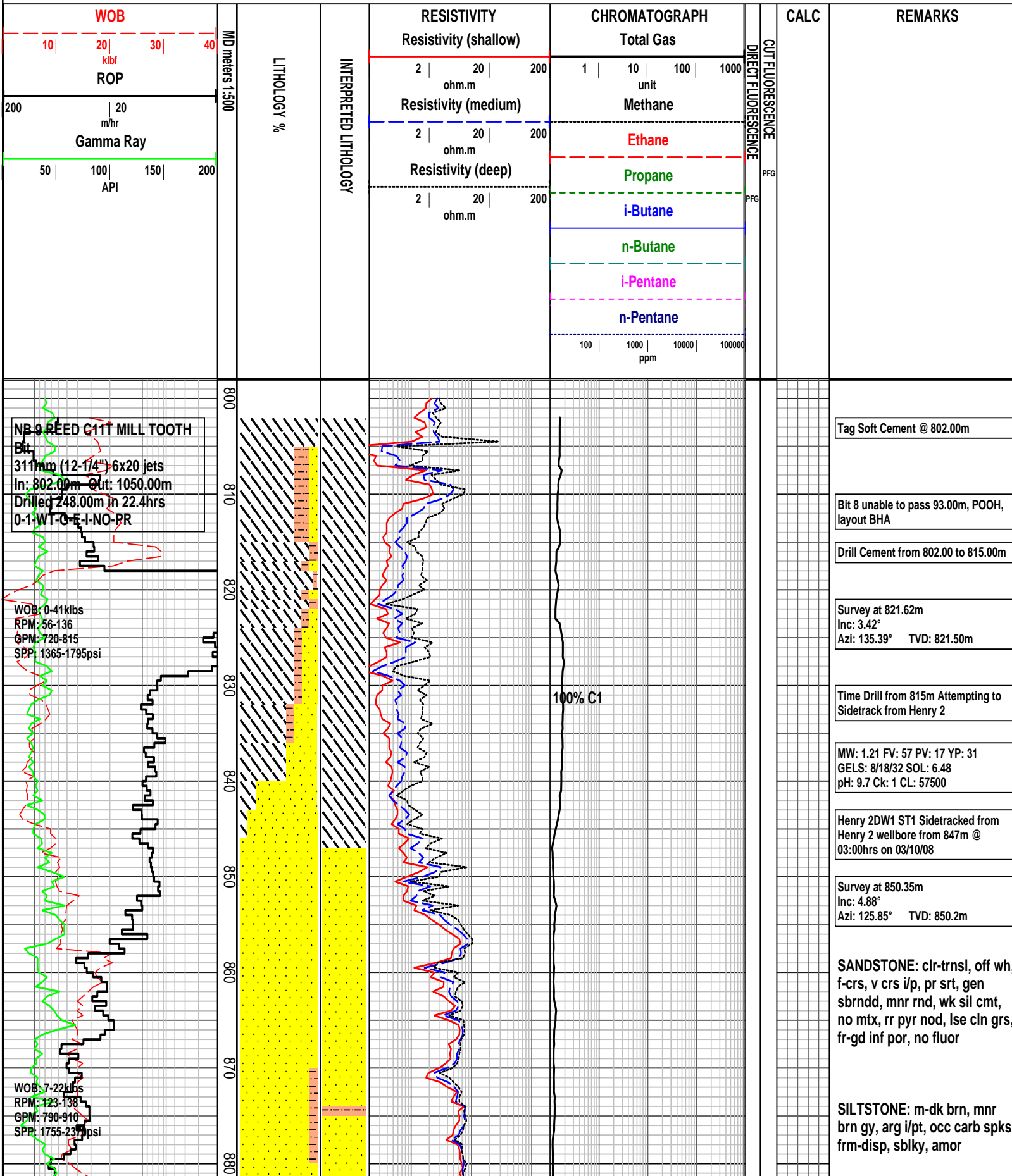
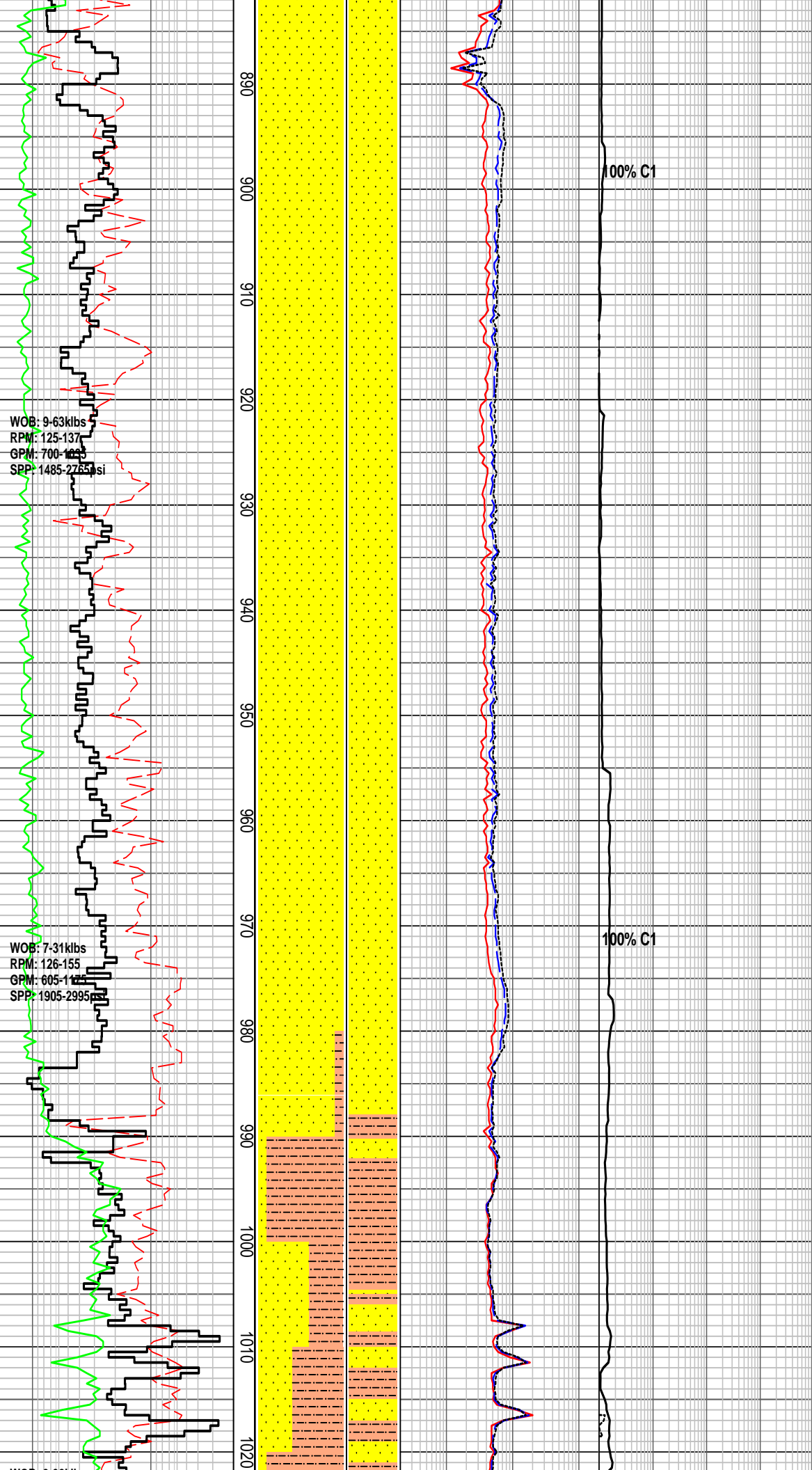


**HENRY 2DW1 ST1 FORMATION EVALUATION LOG**





Survey at 878.21m  
Inc: 6.34°  
Azi: 127.70° TVD: 877.90m

SANDSTONE: clr-trnsl, off wh, m-v crs, pr srt, sbang-dom sbrnrd, wk sil cmt, no mtx, mnr pyr nod, lse cln grs, fr-gd inf por, no fluor

Survey at 909.59m  
Inc: 7.84°  
Azi: 131.90° TVD: 909.10m

SANDSTONE: pl gy-off wh, clr-trnsl, crs-v crs, mod srt, sbang-sbrnrd, mnr rndd, wk sil cmt, no mtx, mnr pyr nod, lse cln grs, fr-gd inf por, no fluor

Survey at 937.25m  
Inc: 10.04°  
Azi: 134.30° TVD: 936.40m

SANDSTONE: clr-trnsl, pl gy i/p, f-crs, occ v crs, pr srt, sbang-dom sbrnrd, rndd i/p, wk sil cmt, mnr pl brn arg mtx, mnr pyr nod, tr lit, lse cln grs, fr-gd inf por, no fluor

Survey at 965.21m  
Inc: 13.00°  
Azi: 131.43° TVD: 963.80m

SANDSTONE: clr-trnsl, f-dom m, crs-v crs i/p, mod srt, sbang-sbrnrd, wk sil cmt, no mtrx, tr liths, lse cln grs, fr-gd inf por, no fluor

Survey at 996.53m  
Inc: 15.29°  
Azi: 121.48° TVD: 994.10m

SILTSTONE: m-dom dk brn, arg, mnr carb spks, disp v sft, amor, mnr sblky

SANDSTONE: clr, trnsl, lt gy, fn-crs gr, pr srt, sbang-pred sbrnrd, wk sil cmt, no mtrx, tr org liths, pred lse, cln qtz grs, fr-gd inf por, no fluor

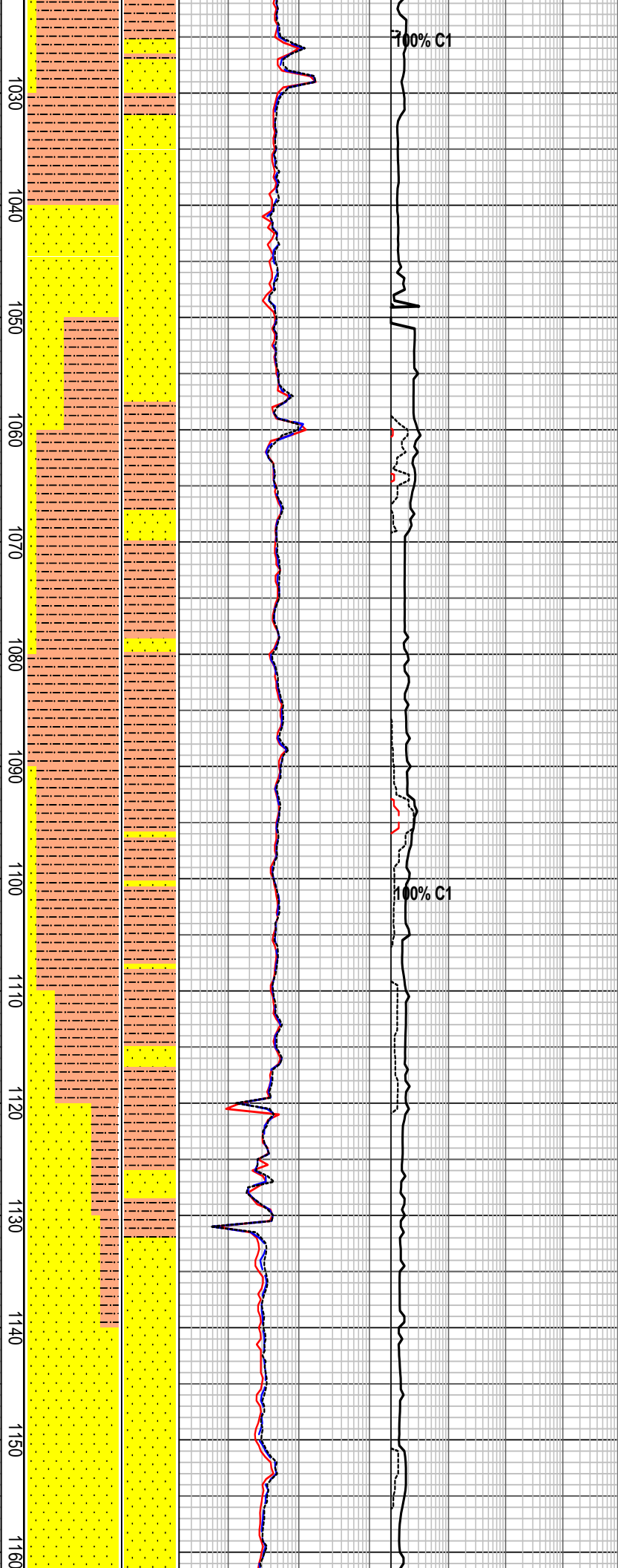
WOB: 3-32kpbs  
RPM: 33-155  
GPM: 650-995  
SPP: 1450-3030psi

04/10/2008

**NB 10 REEF SRSX616M-A16 PDC**  
Bit  
311mm (12-1/4") 3x15 3x16 jets  
In: 1050.00m Out: xxxx.xxm  
Drilled xxx.xxm in xx.xhrs  
X-X-XX-X-X-X-XX-XX

WOB: 7-16kpbs  
RPM: 167-209  
GPM: 953-1030  
SPP: 2364-2711psi

WOB: 4-15kpbs  
RPM: 172-206  
GPM: 841-1080  
SPP: 1923-2870psi



Survey at 1026.43m  
Inc: 15.21°  
Azi: 119.39° TVD: 1023.00m

**SILTSTONE:** m brn, m dk brn, arg, mnr carb spks, v sft & disp, amor, mnr sblky

**SANDSTONE:** clr, trnsl, lt gy, fn-crs gr, pr srt, sbang-pred sbrndd, wk sil cmt, no mtrx, tr orng liths, pred lse, cln qtz grs, fr-gd inf por, no fluor

MW: 1.25 FV: 82 PV: 29 YP: 48  
GELS: 11/23/35 SOL: 7.65  
pH: 9.2 Ck: 1 CL: 63000

**SILTSTONE:** m brn, m dk brn, arg, mnr carb spks, sft & disp, amor, mnr sblky

Survey at 1083.00m  
Inc: 16.35°  
Azi: 122.48° TVD: 1077.30m

**SILTSTONE:** m-dk brn, arg, tr carb spks, sft & disp, amor, mnr sblky

Survey at 1114.21m  
Inc: 17.07°  
Azi: 121.75° TVD: 1107.20m

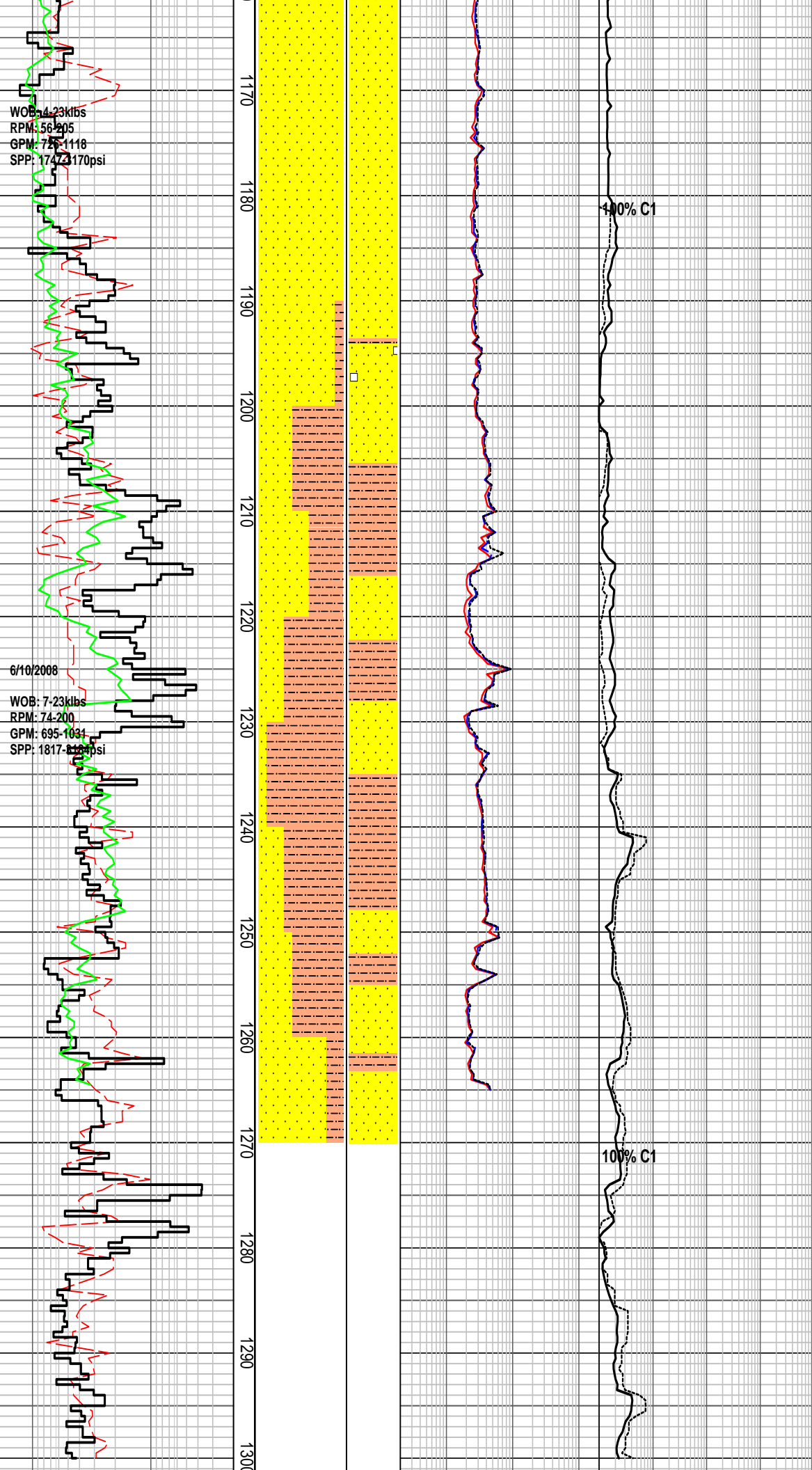
**SILTSTONE:** m brn, m dk brn, arg, mnr carb spks, sft-frm, disp i/p, sblky

1134-1162m Depth Tracking by Drawworks Sensor

**SANDSTONE:** lt brnsh gy, off wh, lt gy, grnsh gy, v f-f gr, tr m, mod wl srt, sbang-sbrnd, abd lt brnsh gy arg mtrx, mnr f gr glauc, tr nod pyr, tr carb filks, fri f gr aggs, v pr vis por, no fluor

Survey at 1142.54m  
Inc: 18.03°  
Azi: 121.60° TVD: 1134.20m

**SANDSTONE:** trnsl, clr, lt gy, f-pred m-v crs, sbrnd, pr-fr srt, pred lse cln qtz grs, gd inf



por, no fluor

**SANDSTONE:** trnsl, clr, wh, lt gy, f-v crs, pred m gr, sbang-pred sbrndd, pr srt, tr off wh arg mtrx, tr glauc, tr yel Fe stn, tr rd liths, tr carb frags, pred lse cln qtz grs, gd inf por, no fluor

Survey at 1198.96m  
Inc: 18.96°  
Azi: 120.96° TVD: 1187.70m

**SANDSTONE:** lt brn, lt brnsh gy, off wh, v f-f gr, tr m, mod wl srt, sbang-sbrndd, abd lt brnsh gy arg mtrx, mn f gr glauc, tr nod pyr, tr carb frags, fri f gr aggs, v pr vis por, no fluor

**SILTSTONE:** m brn gy, m gy, arg, v f aren i/p, tr glauc, tr nod pyr, tr liths, sft frm, blk-y-sbkly

MW: 1.36 FV: 82 PV: 34 YP: 53  
GELS: 11/19/27 SOL: 11.22  
pH: 9.0 Ck: 1 CL: 63000

Survey at 1224.66m  
Inc: 20.37°  
Azi: 121.46° TVD: 1211.9m


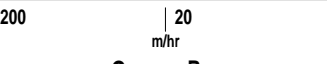
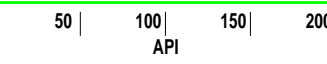
**SILTSTONE:** pl-occ m brn gy, arg, occ carb spks & frags, v sft-disp, amor, sbkly i/p

**SANDSTONE:** clr-trnsl, off wh, m-crs, f i/p, pr srt, sbang-sbrndd, wk sil cmt, occ-com off wh arg mtrx, occ carb spks, lse, fri, v pr vis por, pr inf por, no fluor

**SILTSTONE:** pl brn-brn gy, m brn gy i/pt, arg, mn carb spks, rr glauc grs, v sft-disp, amor, rr sbbkly

Survey at 1255.22m  
Inc: 22.11°  
Azi: 123.50° TVD: 1240.4m

# HENRY 2DW1 ST1 FORMATION EVALUATION LOG

			RESISTIVITY	CHROMATOGRAPH	CALC	REMARKS
<b>WOB</b> 	MD meters 1:500 LITHOLOGY % INTERPRETED LITHOLOGY	<b>ROP</b> 	<b>Resistivity (shallow)</b> 2   20   200 ohm.m	<b>Total Gas</b> 1   10   100   1000 unit		
<b>Gamma Ray</b> 		<b>Resistivity (medium)</b> 2   20   200 ohm.m	<b>Methane</b>			
		<b>Resistivity (deep)</b> 2   20   200 ohm.m	<b>Ethane</b>			
			<b>Propane</b>			
				<b>i-Butane</b>		
				<b>n-Butane</b>		
				<b>i-Pentane</b>		
				<b>n-Pentane</b>		
				100   1000   10000   100000 ppm		

CUT FLUORESCENCE

DIRECT FLUORESCENCE

PFG

PFG